

**FAM168B Antibody (C-term)**  
**Purified Rabbit Polyclonal Antibody (Pab)**  
**Catalog # AP21018c****Specification**

---

**FAM168B Antibody (C-term) - Product Information**

Application	WB,E
Primary Accession	<a href="#">A1KXE4</a>
Other Accession	<a href="#">D4AEP3</a> , <a href="#">Q80XQ8</a> , <a href="#">A8E639</a>
Reactivity	Mouse
Predicted	Bovine, Rat
Host	Rabbit
Clonality	Polyclonal
Isotype	Rabbit IgG
Calculated MW	20324
Antigen Region	165-199

**FAM168B Antibody (C-term) - Additional Information****Gene ID** 130074**Other Names**

Myelin-associated neurite-outgrowth inhibitor, Mani, p20, FAM168B, KIAA0280L, MANI

**Target/Specificity**

This FAM168B antibody is generated from a rabbit immunized with a KLH conjugated synthetic peptide between 165-199 amino acids from the C-terminal region of human FAM168B.

**Dilution**

WB~~1:1000

E~~Use at an assay dependent concentration.

**Format**

Purified polyclonal antibody supplied in PBS with 0.09% (W/V) sodium azide. This antibody is purified through a protein A column, followed by peptide affinity purification.

**Storage**

Maintain refrigerated at 2-8°C for up to 2 weeks. For long term storage store at -20°C in small aliquots to prevent freeze-thaw cycles.

**Precautions**

FAM168B Antibody (C-term) is for research use only and not for use in diagnostic or therapeutic procedures.

**FAM168B Antibody (C-term) - Protein Information****Name** FAM168B

**Synonyms** KIAA0280L, MANI

**Function** Inhibitor of neuronal axonal outgrowth. Acts as a negative regulator of CDC42 and STAT3 and a positive regulator of STMN2. Positive regulator of CDC27.

**Cellular Location**

Cytoplasm, perinuclear region {ECO:0000250|UniProtKB:D4AEP3}. Cell membrane {ECO:0000250|UniProtKB:Q80XQ8}; Multi-pass membrane protein {ECO:0000250|UniProtKB:Q80XQ8}. Cell projection, axon {ECO:0000250|UniProtKB:Q80XQ8}. Note=Expressed in neuronal cell bodies and axonal fibers. {ECO:0000250|UniProtKB:Q80XQ8}

**Tissue Location**

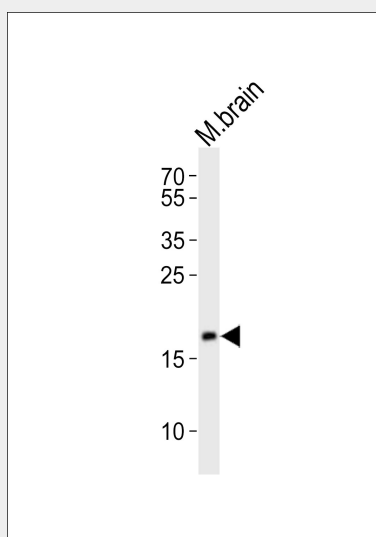
Expressed in the brain, within neuronal axonal fibers and associated with myelin sheets (at protein level). Expression tends to be lower in the brain of Alzheimer disease patients compared to healthy individuals (at protein level)

**FAM168B Antibody (C-term) - Protocols**

Provided below are standard protocols that you may find useful for product applications.

- [Western Blot](#)
- [Blocking Peptides](#)
- [Dot Blot](#)
- [Immunohistochemistry](#)
- [Immunofluorescence](#)
- [Immunoprecipitation](#)
- [Flow Cytometry](#)
- [Cell Culture](#)

**FAM168B Antibody (C-term) - Images**



Western blot analysis of lysate from mouse brain tissue lysate, using FAM168B Antibody (C-term)(Cat. #AP21018c). AP21018c was diluted at 1:1000. A goat anti-rabbit IgG H&L(HRP) at 1:10000 dilution was used as the secondary antibody. Lysate at 20ug.

**FAM168B Antibody (C-term) - Background**

Modulates neuronal axonal outgrowth by acting as a negative regulator of CDC42 and STAT3 and a positive regulator of STMN2. Positive regulator of CDC27 (By similarity).

#### **FAM168B Antibody (C-term) - References**

Mishra M.,et al.J. Cell. Mol. Med. 15:1713-1725(2011).  
Mural R.J.,et al.Submitted (JUL-2005) to the EMBL/GenBank/DDBJ databases.  
Gauci S.,et al.Anal. Chem. 81:4493-4501(2009).  
Mishra M.,et al.FEBS Lett. 586:3018-3023(2012).